

Contractul: CL6 - "Sistem de Management Integrat al Deseurilor din Judetul Suceava - Platforme de colectare in judetul Suceava"

Beneficiar: Consiliul Judetean Suceava

Constructor: S.C. Symmetrica S.R.L.

Obiectul: *Platforme colectare deseuri – Oras Dolhasca*

PLATORME DE COLECTARE ORAS DOLHASCA

Nr. Crt.	LOCATIE PLATFORME
1	SAT POIENARI – GAVRIL DAN
2	SAT PROBOTA – MANTALUTA
3	SAT PROBOTA – POD MOSNEAGU
4	SAT PROBOTA – POD GRIGORIU
5	SAT PROBOTA – HOTAR TATARUS
6	SAT PROBOTA – ISTRATE II
7	SAT PROBOTA – BOZOANCA VASILE
8	SAT PROBOTA – COSTEL TUDOSE
9	SAT PROBOTA – COLT MANASTIRE
10	SAT PROBOTA – CRISTI COLIBA
11	SAT PROBOTA – GHEABLU MANOLEA
12	SAT PROBOTA – TODIRAS ANDREI
13	SAT PROBOTA – CIURSA IONEL (CARASEL)
14	SAT PROBOTA – PUNTE PIETONALA (CIURSA)
15	SAT PROBOTA – AMAICII DORIN
16	SAT PROBOTA – TIPAU
17	SAT PROBOTA – ICHIM MAFTEI
18	SAT PROBOTA – DASCALESCU (NICU COJOCARIU)
19	SAT PROBOTA – SAVIN (LUTARIE)
20	SAT PROBOTA – CENTRU
21	SAT GULIA – VIZITIU GHEORGHE MUTATA GRADINITA
22	SAT GULIA – STOICA COLT PADURE
23	SAT GULIA – STOICA V. BARIERA
24	SAT GULIA – BARIERA PADURE
25	SAT GULIA – PANDIL DIDI
26	SAT GULIA – CIUBOTARIU ION
27	SAT GULIA – VIS A VIS GAVRILEI TRAIAN
28	SAT VALEA POIENII – INT SPRE CATUN SOMUZ
29	SAT VALEA POIENII – INTERSECTIE BISERICA
30	SAT VALEA POIENII – PAVALOAIA PETRU DRUM
31	DOLHASCA – COLT BARIERA VALEA POIENII
32	SAT VAMENI – NOVAC
33	DOLHASCA – BAHNA VAMENI
34	DOLHASCA – PIATA 1
35	DOLHASCA – PIATA 2 (PRIMARIE)

ADRESA DE CORESPONDENTA: S.C. SYMMETRICA S.R.L. Mun. Suceava, str. Veronica Micle, nr. 10, CP 720217, jud. Suceava, tel. 0230522619, fax. 0230522250

Contractul: CL6 - “Sistem de Management Integrat al Deseurilor din Judetul Suceava - Platforme de colectare in judetul Suceava“

Beneficiar: Consiliul Judetean Suceava

Constructor: S.C. Symmetrica S.R.L.

Obiectul: *Platforme colectare deseuri – Oras Dolhasca*

36	DOLHASCA – SERVICE ZUP
37	DOLHASCA – VIS A VIS PURAVAT NECULAI
38	DOLHASCA – DRUM OCOL SILVIC SIRET
39	DOLHASCA – VIS A VIS AGANENCI NECULAI
40	DOLHASCA – TUG
41	DOLHASCA – EUGEN SPRE LINIA TUG
42	DOLHASCA – CAPAT POD (COJOCARU)
43	SAT BUDENI – PUNTE SIRET
44	SAT BUDENI – SAVA ION DE VALE
45	SAT BUDENI – TARABUTA NICULITA
46	SAT BUDENI – INTERSECTIE GONTARU
47	SAT BUDENI – PUSCASU
48	SAT BUDENI – HOTAR BUDA
49	SAT SILISTEA – MAGAZIN AIOANEI
50	SAT SILISTEA – COMPLEX
51	DOLHASCA – SERVICE BUGHIU
52	SAT SILISTEA – MAGAZIE
53	DOLHASCA – SPATE MOARA MOPAN
54	DOLHASCA – POLITIE
55	DOLHASCA – DOMNICA MIRCEA (HAIDUCU)
56	DOLHASCA – SALA SPORT
57	SAT SANDENI – HATAS CHIRIAC
58	SAT POIANA – LA IONITA
59	SAT POIANA – LA CAZANE
60	SAT POIANA – LA BISERICA
61	SAT POIANA – PINTEA VASILE
62	SAT POIANA – STRUGARU ION – CIRNEALA ION

ADRESA DE CORESPONDENTA: S.C. SYMMETRICA S.R.L. Mun. Suceava, str. Veronica Micle, nr. 10, CP 720217, jud. Suceava, tel. 0230522619, fax. 0230522250



Latitude: N 47°23.251' (47°23'15.1"), Longitude: E 26°36.249' (26°36'15.0"), Altitude (Barometer): 285.00m

1



Latitude: N 47°22.603' (47°22'36.2"), Longitude: E 26°36.247' (26°36'14.8"), Altitude (Barometer): 199.00m

2



Latitude: N 47°22.517' (47°22'31.0"), Longitude: E 26°36.877' (26°36'52.6"), Altitude (Barometer): 176.00m

3



Latitude: N 47°22.462' (47°22'27.7"), Longitude: E 26°36.933' (26°36'56.0"), Altitude (Barometer): 175.00m

4



Latitude: N 47°22.275' (47°22'16.5"), Longitude: E 26°37.001' (26°37'0.1"), Altitude (Barometer): 240.00m

5



Latitude: N 47°22.717' (47°22'43.0"), Longitude: E 26°36.788' (26°36'47.3"), Altitude (Barometer): 221.00m

6



Latitude: N 47°22.586' (47°22'35.2"), Longitude: E 26°37.206' (26°37'12.4"), Altitude (Barometer): 187.00m

7



Latitude: N 47°22.719' (47°22'43.1"), Longitude: E 26°37.192' (26°37'11.5"), Altitude (Barometer): 184.00m

8



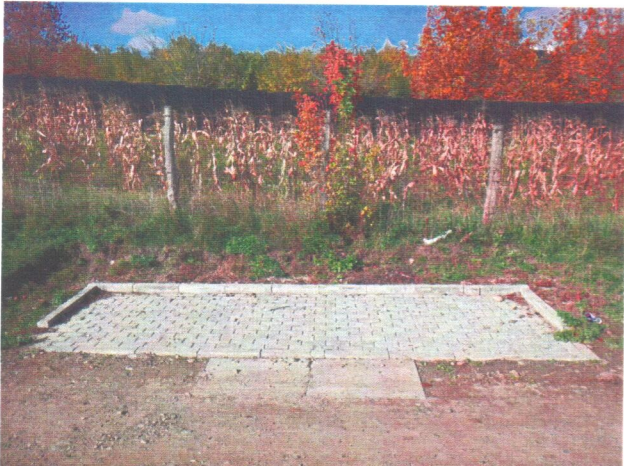
Latitude: N 47°22.515' (47°22'30.9"), Longitude: E 26°37.359' (26°37'21.6"), Altitude (Barometer): 167.00m

9



Latitude: N 47°22.374' (47°22'22.5"), Longitude: E 26°37.362' (26°37'21.7"), Altitude (Barometer): 174.00m

10



Latitude: N 47°22.431' (47°22'25.9"), Longitude: E 26°37.544' (26°37'32.7"), Altitude (Barometer): 169.00m

11



Latitude: N 47°22.636' (47°22'38.1"), Longitude: E 26°37.750' (26°37'45.0"), Altitude (Barometer): 152.00m

12



Latitude: N 47°22.572' (47°22'34.3"), Longitude: E 26°37.923' (26°37'55.4"), Altitude (Barometer): 142.00m

13



Latitude: N 47°22.477' (47°22'28.6"), Longitude: E 26°37.761' (26°37'45.7"), Altitude (Barometer): 152.00m

14



Latitude: N 47°22.388' (47°22'23.3"), Longitude: E 26°38.002' (26°38'0.1"), Altitude (Barometer): 166.00m

15



Latitude: N 47°22.174' (47°22'10.4"), Longitude: E 26°38.163' (26°38'9.8"), Altitude (Barometer): 187.00m

16



Latitude: N 47°22.317' (47°22'19.0"), Longitude: E 26°38.556' (26°38'33.3"), Altitude (Barometer): 139.00m

17



Latitude: N 47°22.382' (47°22'22.9"), Longitude: E 26°38.938' (26°38'56.3"), Altitude (Barometer): 128.00m

18



Latitude: N 47°22.114' (47°22'6.8"), Longitude: E 26°39.348' (26°39'20.9"), Altitude (Barometer): 104.00m

19



Latitude: N 47°22.613' (47°22'36.8"), Longitude: E 26°37.465' (26°37'27.9"), Altitude (Barometer): 161.00m

20



Latitude: N 47°23.651' (47°23'39.1"), Longitude: E 26°36.958' (26°36'57.5"), Altitude (Barometer): 205.00m

21



Latitude: N 47°23.801' (47°23'48.0"), Longitude: E 26°36.412' (26°36'24.7"), Altitude (Barometer): 249.00m

22



Latitude: N 47°23.897' (47°23'53.8"), Longitude: E 26°36.433' (26°36'26.0"), Altitude (Barometer): 288.00m

23



Latitude: N 47°23.968' (47°23'58.1"), Longitude: E 26°36.462' (26°36'27.7"), Altitude (Barometer): 240.00m

24



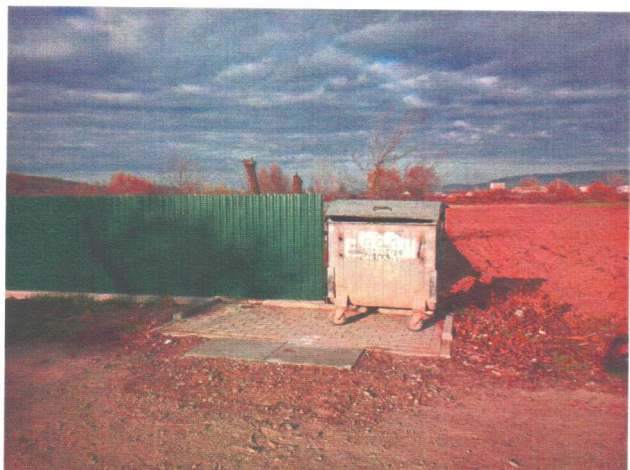
Latitude: N 47°23.793' (47°23'47.6"), Longitude: E 26°36.850' (26°36'51.0"), Altitude (Barometer): 209.00m

25



Latitude: N 47°25.031' (47°25'1.9"), Longitude: E 26°36.016' (26°36'1.0"), Altitude (Barometer): 163.00m

26



Latitude: N 47°25.140' (47°25'8.4"), Longitude: E 26°35.894' (26°35'53.7"), Altitude (Barometer): 157.00m

27



Latitude: N 47°25.364' (47°25'21.8"), Longitude: E 26°34.721' (26°34'43.2"), Altitude (Barometer): 115.00m

28



Latitude: N 47°24.888' (47°24'53.3"), Longitude: E 26°34.102' (26°34'6.1"), Altitude (Barometer): 121.00m

29



Latitude: N 47°24.690' (47°24'41.4"), Longitude: E 26°33.814' (26°33'48.9"), Altitude (Barometer): 119.00m

30



Latitude: N 47°25.432' (47°25'25.9"), Longitude: E 26°35.288' (26°35'17.3"), Altitude (Barometer): 110.00m

31



Latitude: N 47°26.039' (47°26'2.4"), Longitude: E 26°34.469' (26°34'28.2"), Altitude (Barometer): 143.00m

32



Latitude: N 47°25.709' (47°25'42.5"), Longitude: E 26°34.879' (26°34'52.8"), Altitude (Barometer): 109.00m

33



Latitude: N 47°25.157' (47°25'9.4"), Longitude: E 26°36.797' (26°36'47.8"), Altitude (Barometer): 92.00m

34



Latitude: N 47°25.122' (47°25'7.3"), Longitude: E 26°36.834' (26°36'50.0"), Altitude (Barometer): 104.00m

35



Latitude: N 47°25.726' (47°25'43.5"), Longitude: E 26°36.240' (26°36'14.4"), Altitude (Barometer): 271.00m

36



Latitude: N 47°25.577' (47°25'34.6"), Longitude: E 26°37.031' (26°37'1.8"), Altitude (Barometer): 109.00m

37



Latitude: N 47°25.798' (47°25'47.9"), Longitude: E 26°36.962' (26°36'57.7"), Altitude (Barometer): 102.00m

38



Latitude: N 47°25.871' (47°25'52.3"), Longitude: E 26°37.728' (26°37'43.7"), Altitude (Barometer): 109.00m

39



Latitude: N 47°25.323' (47°25'19.4"), Longitude: E 26°38.483' (26°38'29.0"), Altitude (Barometer): 135.00m

40



Latitude: N 47°25.082' (47°25'4.9"), Longitude: E 26°37.722' (26°37'43.3"), Altitude (Barometer): 105.00m

41



Latitude: N 47°25.859' (47°25'51.5"), Longitude: E 26°38.094' (26°38'5.6"), Altitude (Barometer): 97.00m

42



Latitude: N 47°25.215' (47°25'12.9"), Longitude: E 26°38.820' (26°38'49.2"), Altitude (Barometer): 113.00m

43



Latitude: N 47°24.880' (47°24'52.8"), Longitude: E 26°38.916' (26°38'55.0"), Altitude (Barometer): 130.00m

44



Latitude: N 47°24.886' (47°24'53.2"), Longitude: E 26°39.345' (26°39'20.7"), Altitude (Barometer): 146.00m

45



Latitude: N 47°24.527' (47°24'31.6"), Longitude: E 26°39.687' (26°39'41.2"), Altitude (Barometer): 106.00m

46



Latitude: N 47°24.854' (47°24'51.2"), Longitude: E 26°39.594' (26°39'35.7"), Altitude (Barometer): 133.00m

47



Latitude: N 47°24.313' (47°24'18.8"), Longitude: E 26°39.828' (26°39'49.7"), Altitude (Barometer): 113.00m

48



Latitude: N 47°26.790' (47°26'47.4"), Longitude: E 26°38.247' (26°38'14.8"), Altitude (Barometer): 93.00m

49



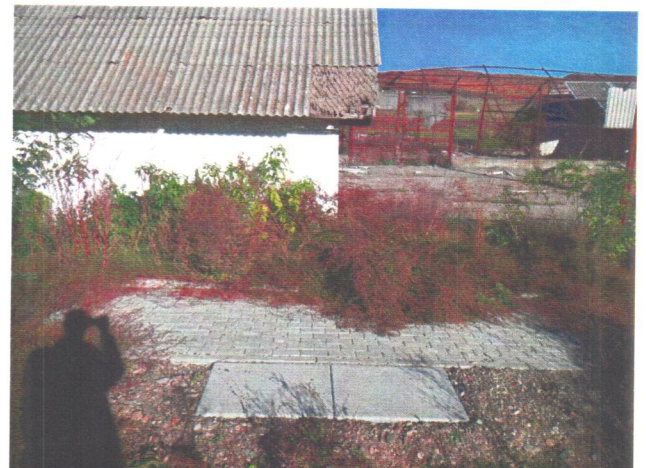
Latitude: N 47°27.477' (47°27'28.6"), Longitude: E 26°37.717' (26°37'43.0"), Altitude (Barometer): 126.00m

50



Latitude: —, Longitude: —, Altitude (Barometer): 279.00m

51



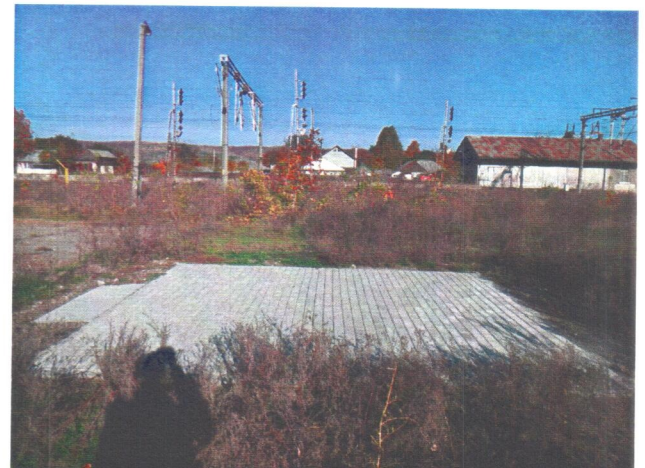
Latitude: N 47°27.063' (47°27'3.8"), Longitude: E 26°38.157' (26°38'9.4"), Altitude (Barometer): 118.00m

52



Latitude: N 47°25.759' (47°25'45.5"), Longitude: E 26°36.475' (26°36'28.5"), Altitude (Barometer): 106.00m

53



Latitude: N 47°25.682' (47°25'40.9"), Longitude: E 26°36.414' (26°36'24.9"), Altitude (Barometer): 108.00m

54



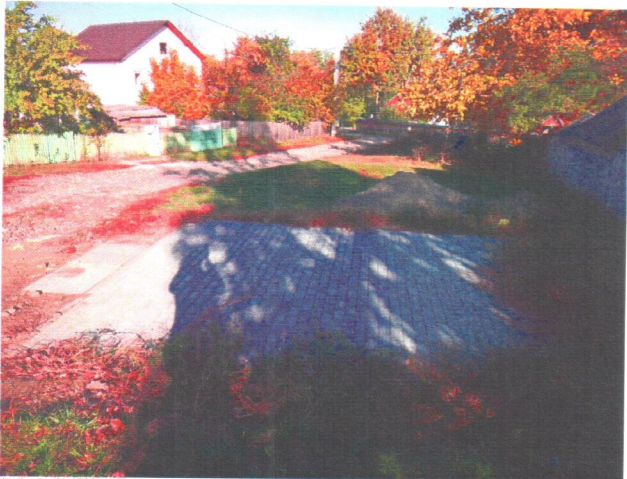
Latitude: N 47°25.583' (47°25'35.0"), Longitude: E 26°36.507' (26°36'30.4"), Altitude (Barometer): 110.00m

55



Latitude: N 47°25.566' (47°25'33.9"), Longitude: E 26°36.283' (26°36'17.0"), Altitude (Barometer): 110.00m

56



Latitude: N 47°25.964' (47°25'57.8"), Longitude: E 26°35.724' (26°35'43.5"), Altitude (Barometer): 135.00m

57



Latitude: N 47°27.929' (47°27'55.7"), Longitude: E 26°33.851' (26°33'51.1"), Altitude (Barometer): 157.00m

58



Latitude: N 47°27.748' (47°27'44.9"), Longitude: E 26°33.927' (26°33'55.6"), Altitude (Barometer): 165.00m

59



Latitude: N 47°27.698' (47°27'41.9"), Longitude: E 26°34.270' (26°34'16.2"), Altitude (Barometer): 158.00m

60



Latitude: N 47°27.612' (47°27'36.7"), Longitude: E 26°34.401' (26°34'24.1"), Altitude (Barometer): 147.00m

61



Latitude: N 47°27.293' (47°27'17.6"), Longitude: E 26°34.325' (26°34'19.5"), Altitude (Barometer): 164.00m

62